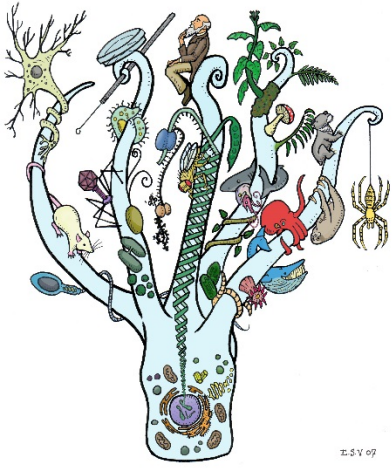


Monday, Feb 12, 2018

Pick up: flower parts



Today you will:

1. Learn plant structure & function: roots, stems, leaves, flowers
2. Complete flower parts handout

Homework/Planner:

Quiz Tuesday on Plants & Energy!!!!

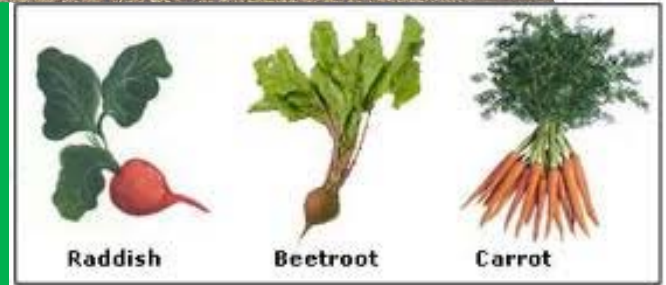
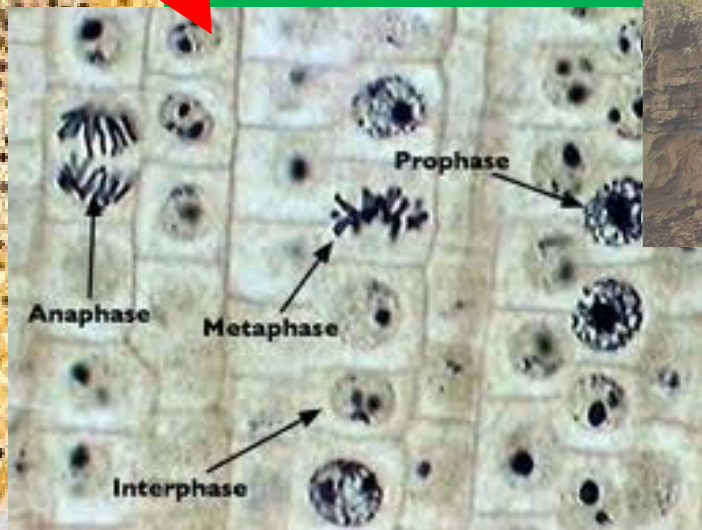
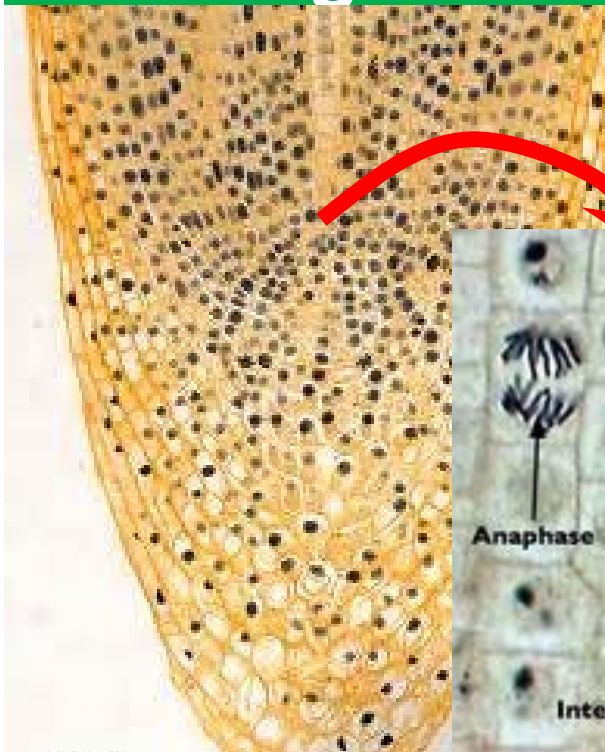
DSQ

**TB pg 648 Draw the root diagram
in Fig. 21.7 next to Meristematic
tissue**

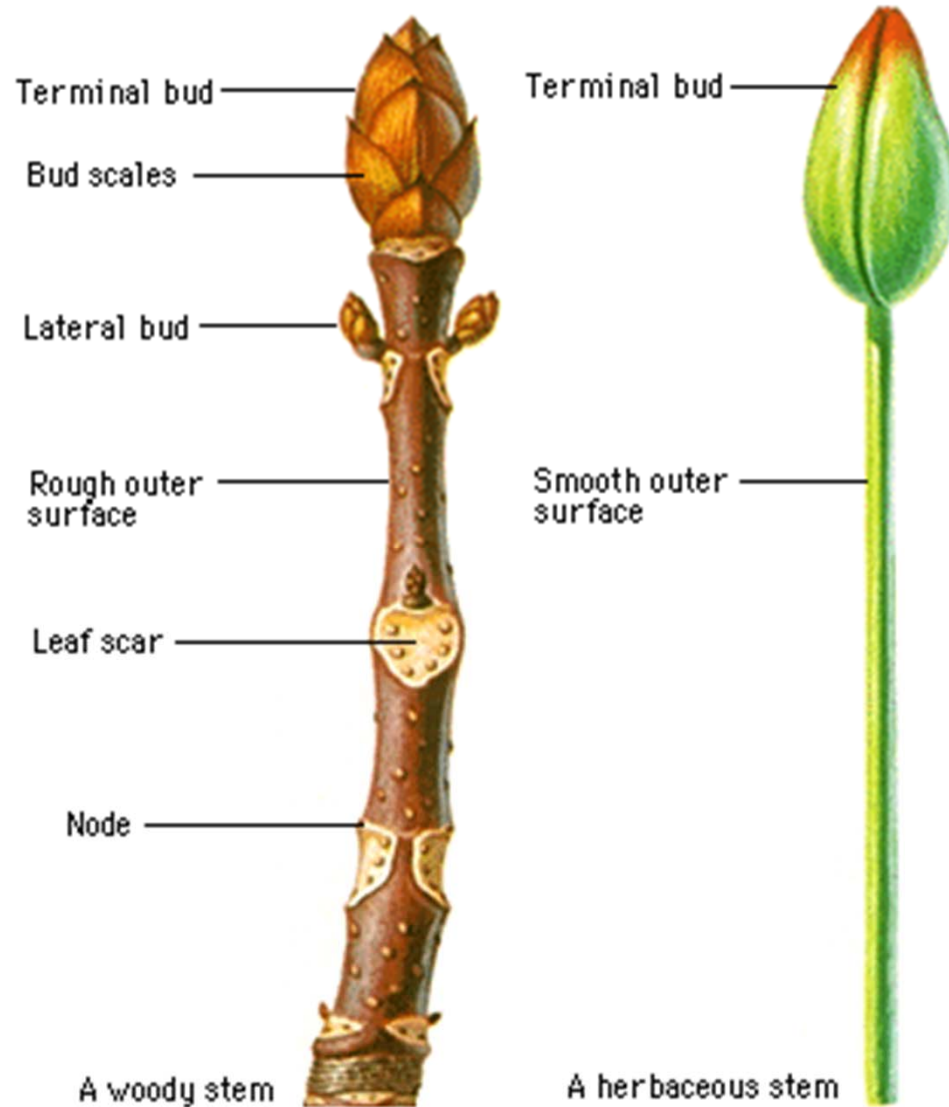
Cornell Notes

Roots : anchor, support, prevent erosion, storage, absorption

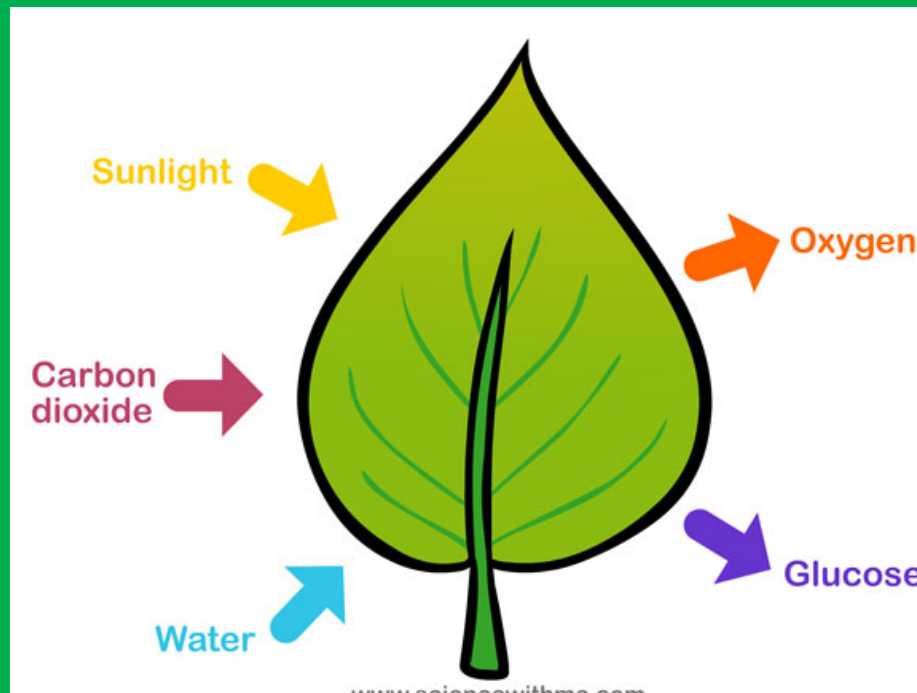
a) Meristem/Meristematic Region-area of growth



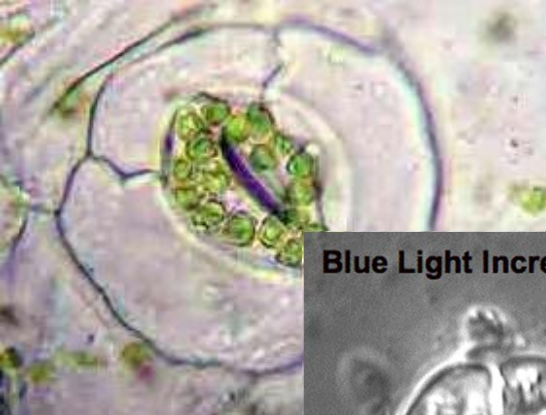
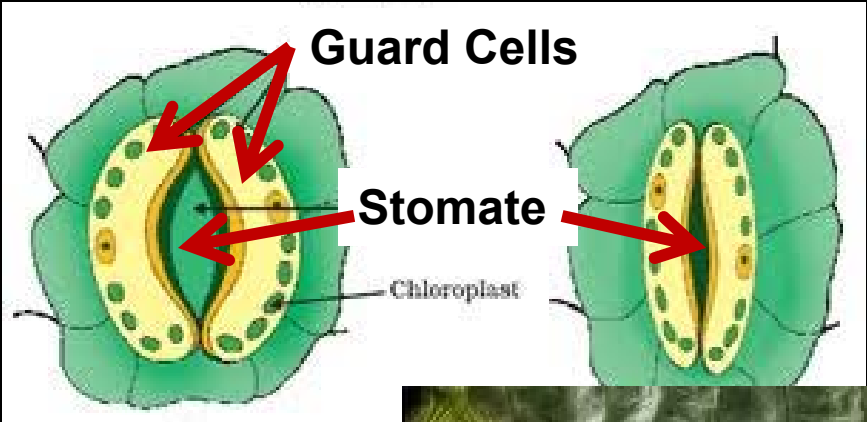
Stems: transport, support



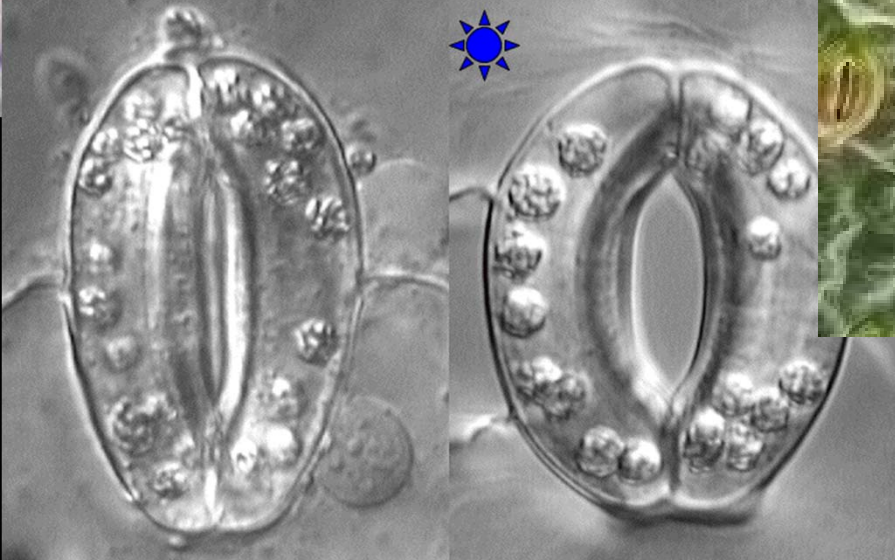
Leaves: food production thru
photosynthesis → food is Glucose =
sugar



Guard Cells = controls opening of stomata



Blue Light Increases Guard Cell Turgor, Opening Stomata



Flowers: reproduction

a) StaMEN = male

b) Pistil (aka carpel) = female

