

Fri, Feb 23, 2018

Pick up: none

Today you will:

1. Content check-Female Anatomy
2. [Crash Course-Male Anatomy](#)
3. Review Male Anatomy & function

Homework/Planner:

Quiz on Reproductive Anatomy next Friday!

Match the function with the correct organ

D 1. Cervix

E 2. Vagina

C 3. Uterus

B 4. Oviduct (Fallopian Tube)

A 5. Ovaries

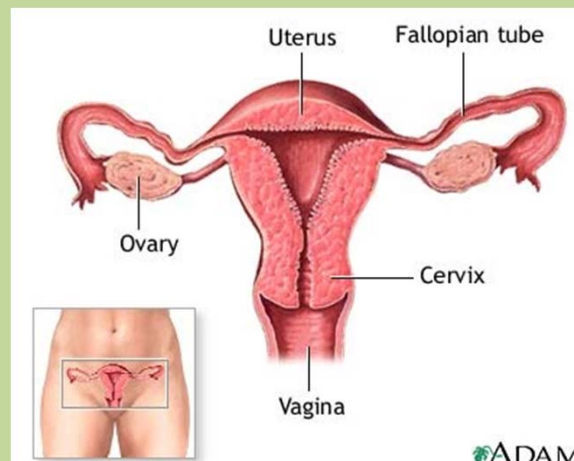
A. Production of egg cells or ova

B. Transports egg to the uterus

C. Expands to hold the growing fetus

D. Lower end of the uterus

E. Tube-like organ connecting uterus to outside the body



Testicles -**Make Testosterone & responsible for generating sperm**

Scrotum-**Pouch containing the testicles**

Epididymis-**Long coiled tube on back of testicles; transports & stores immature sperm cells**

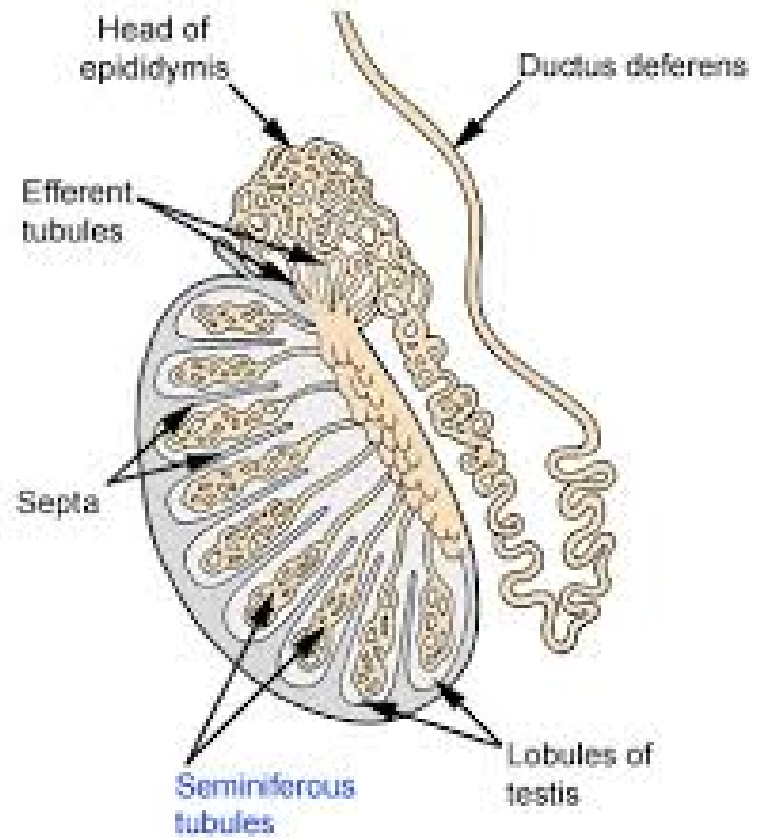
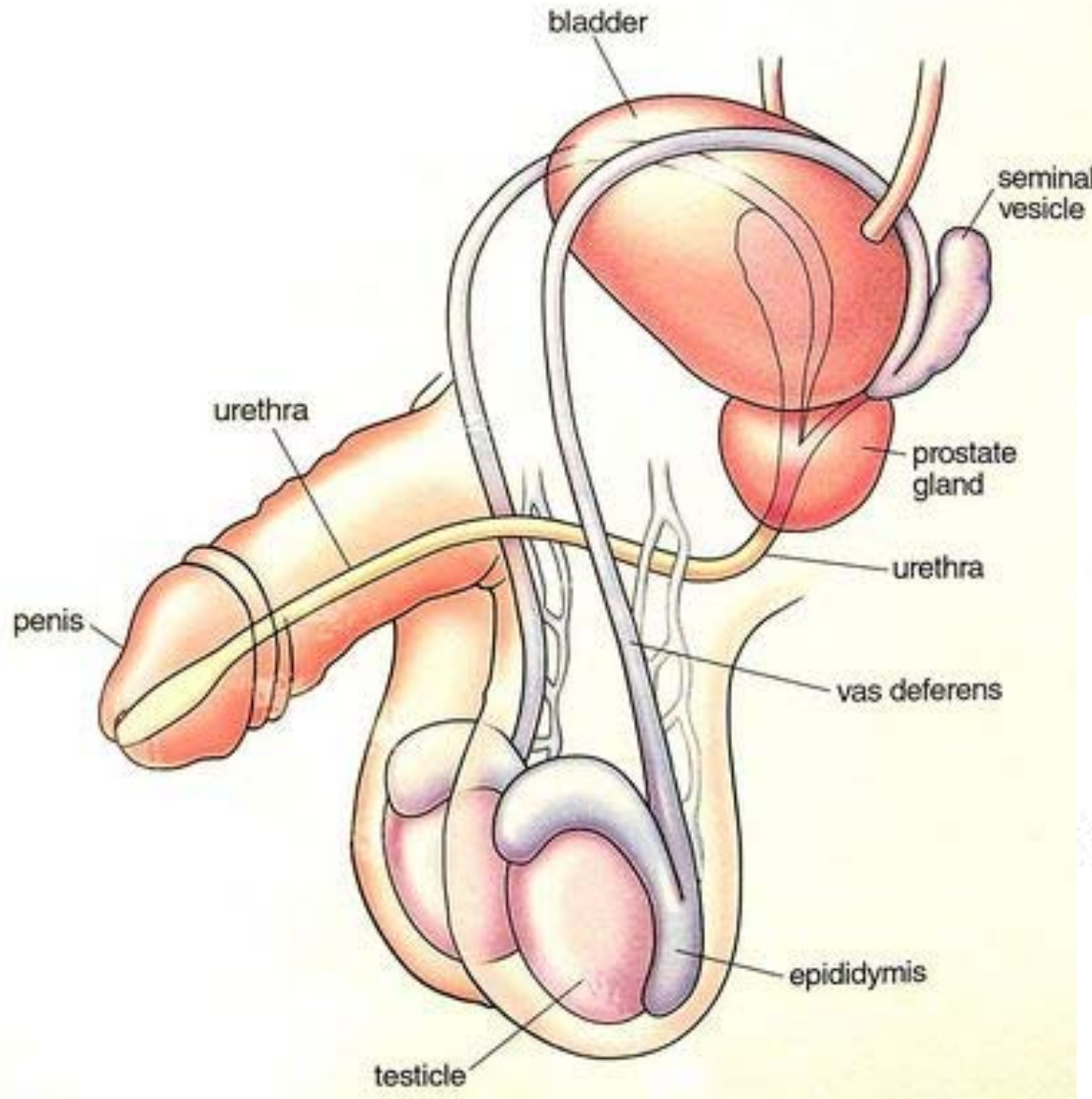
Vas Deferens-**Long, muscular tube that transports mature sperm to the urethra**

Seminal Vesicle-**Sac-like pouches that produce a sugar-rich fluid that provides sperm with a source of energy**

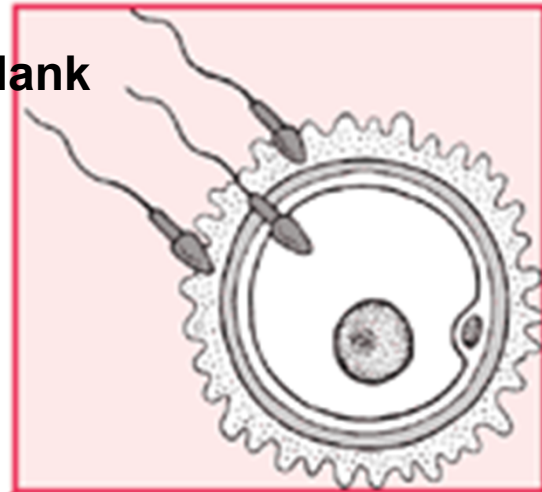
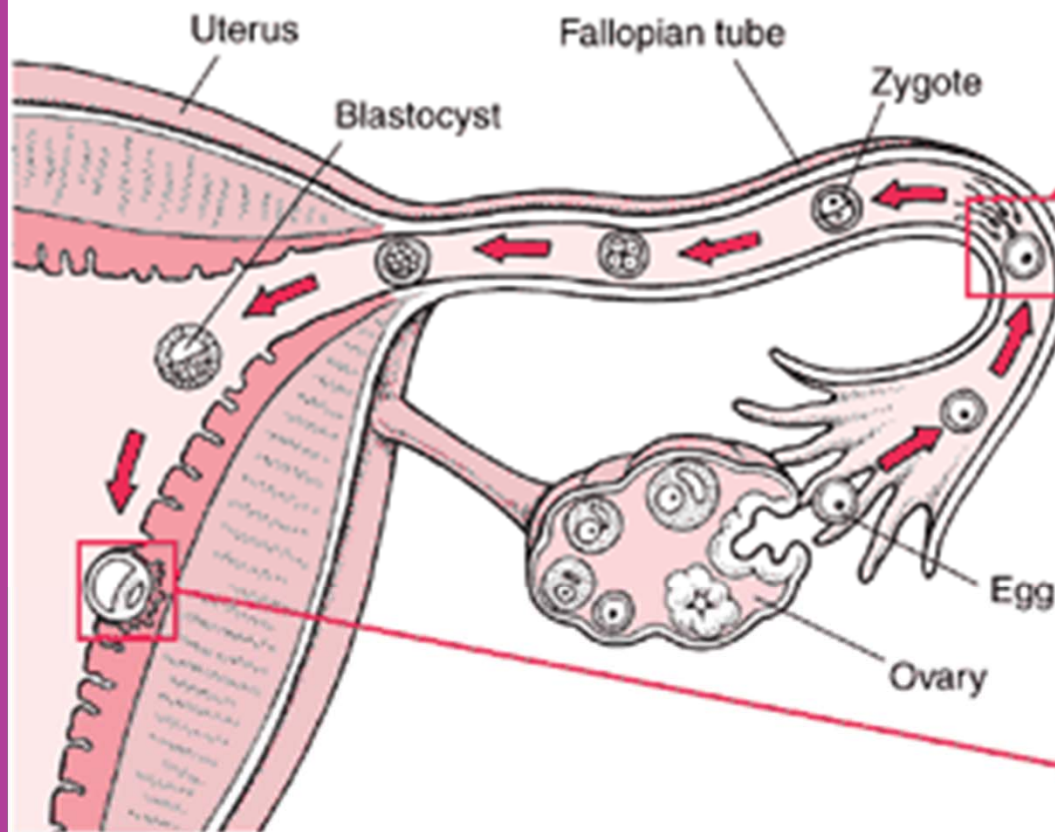
Penis-**Transports sperm & urine**

Seminiferous tubules-**Tubes within testicles; Produce sperm cells**

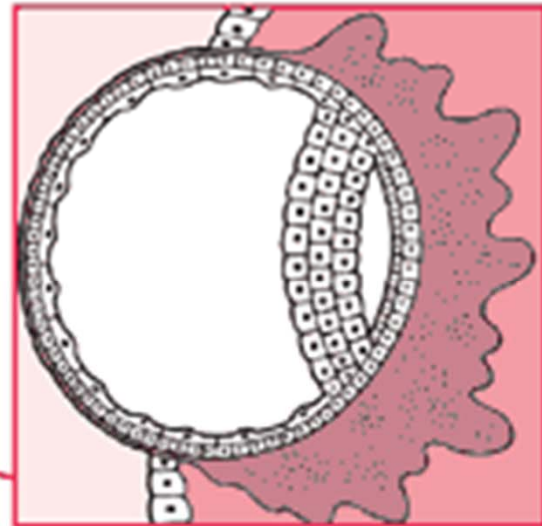
Male Reproductive System



ISN pg 17 Use TB pg 798 to complete fill-in-the-blank



Fertilization



Implantation