

Wednesday, Feb 7, 2018

Pick up: none

Today you will:

- Classification Activity
- Cladograms

Homework/Planner:

Study Guide due Thurs for DIA

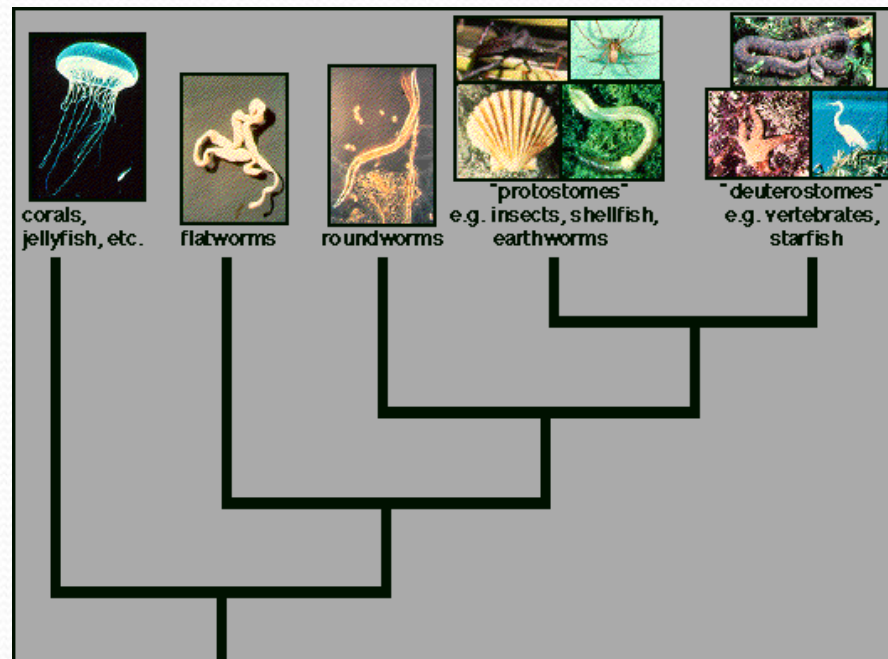
- use Chapters 10, 11, 12, 17-20

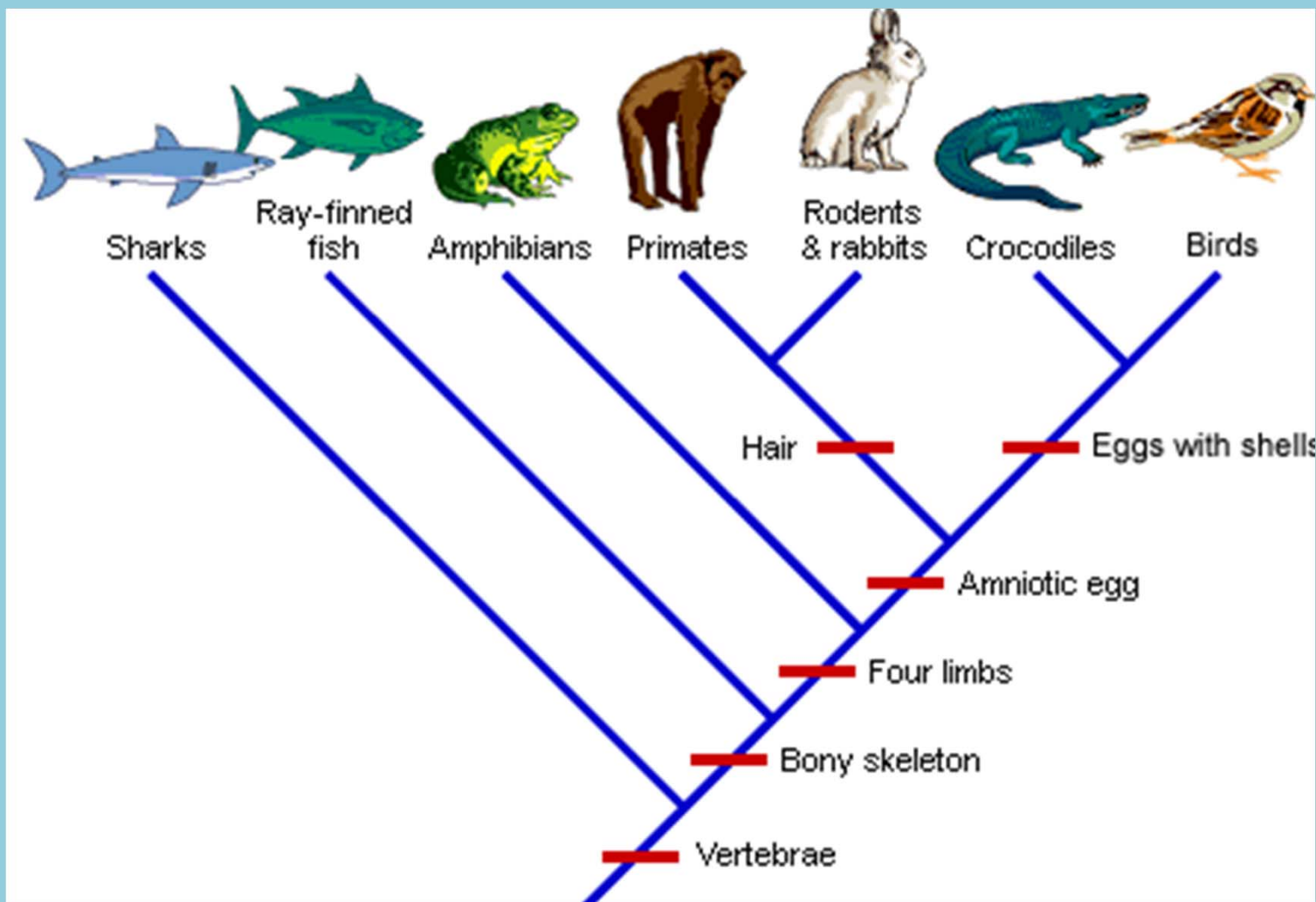
Stop Think And Reflect

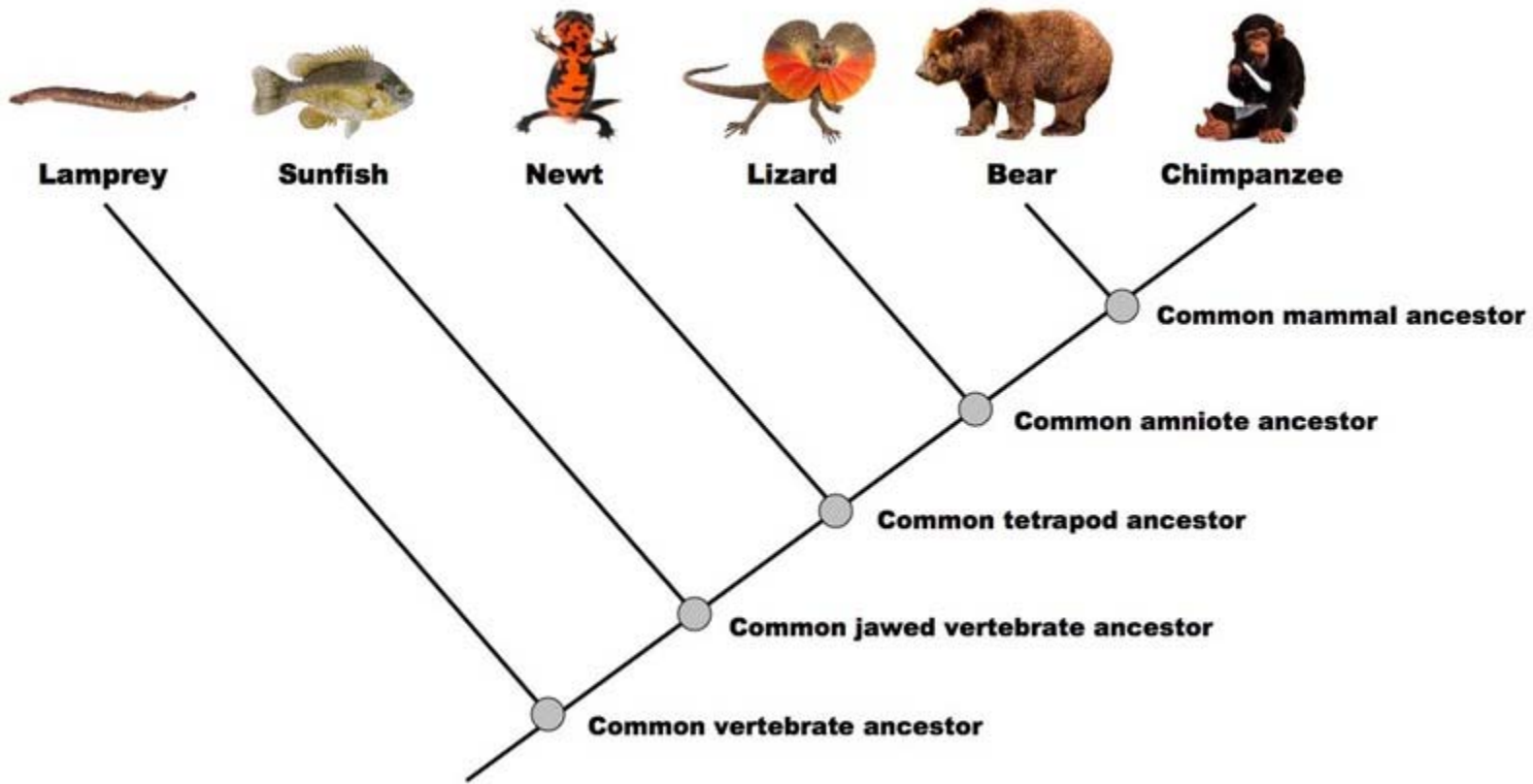
1. We are in the kingdom... • Animalia
2. The more taxa (categories) an organism shares the more... • Alike they are
3. The two-word naming system Linnaeus came up with is... • Genus & species
4. The 3 domains are... • Archaea, Bacteria, Eukarya
5. The 6 kingdoms are... • Archaeobacteria, Eubacteria, Protista, Fungi, Plantae, Animalia

Phylogeny

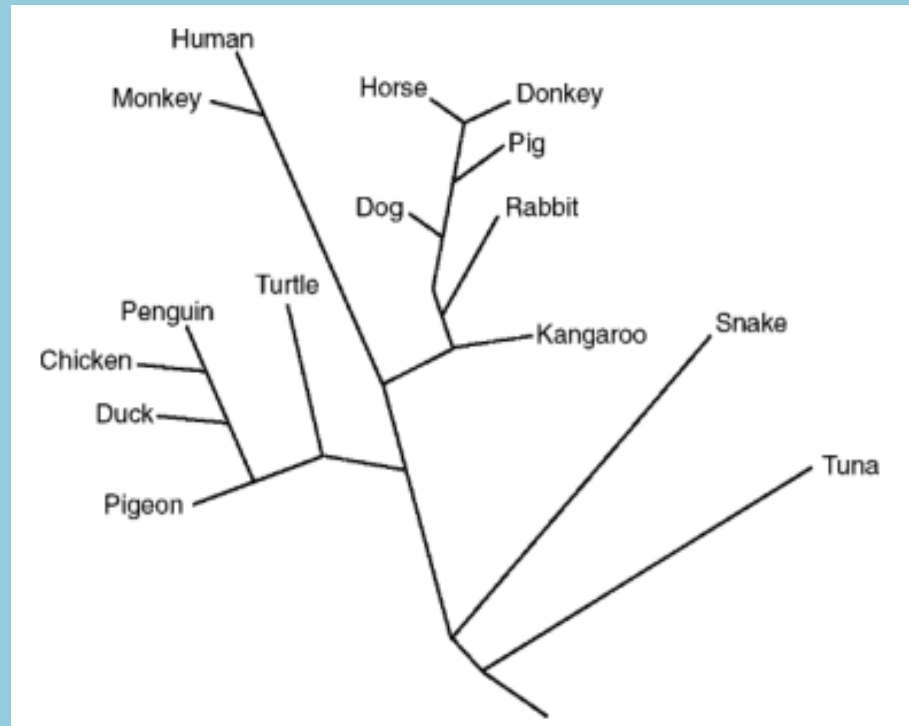
- The evolutionary history for a group of species.
 - Uses fossil records, molecular data (DNA) & evidence from living species
 - More than just physical traits







4. Based on their analysis of the differences of amino acid sequences of one kind of protein, scientists prepared the evolutionary tree below.



According to this diagram, the DNA of which pair of organisms would show the greatest similarity?

- A. Snake and tuna
- B. Turtle and rabbit
- C. Horse and donkey
- D. Penguin and turtle