

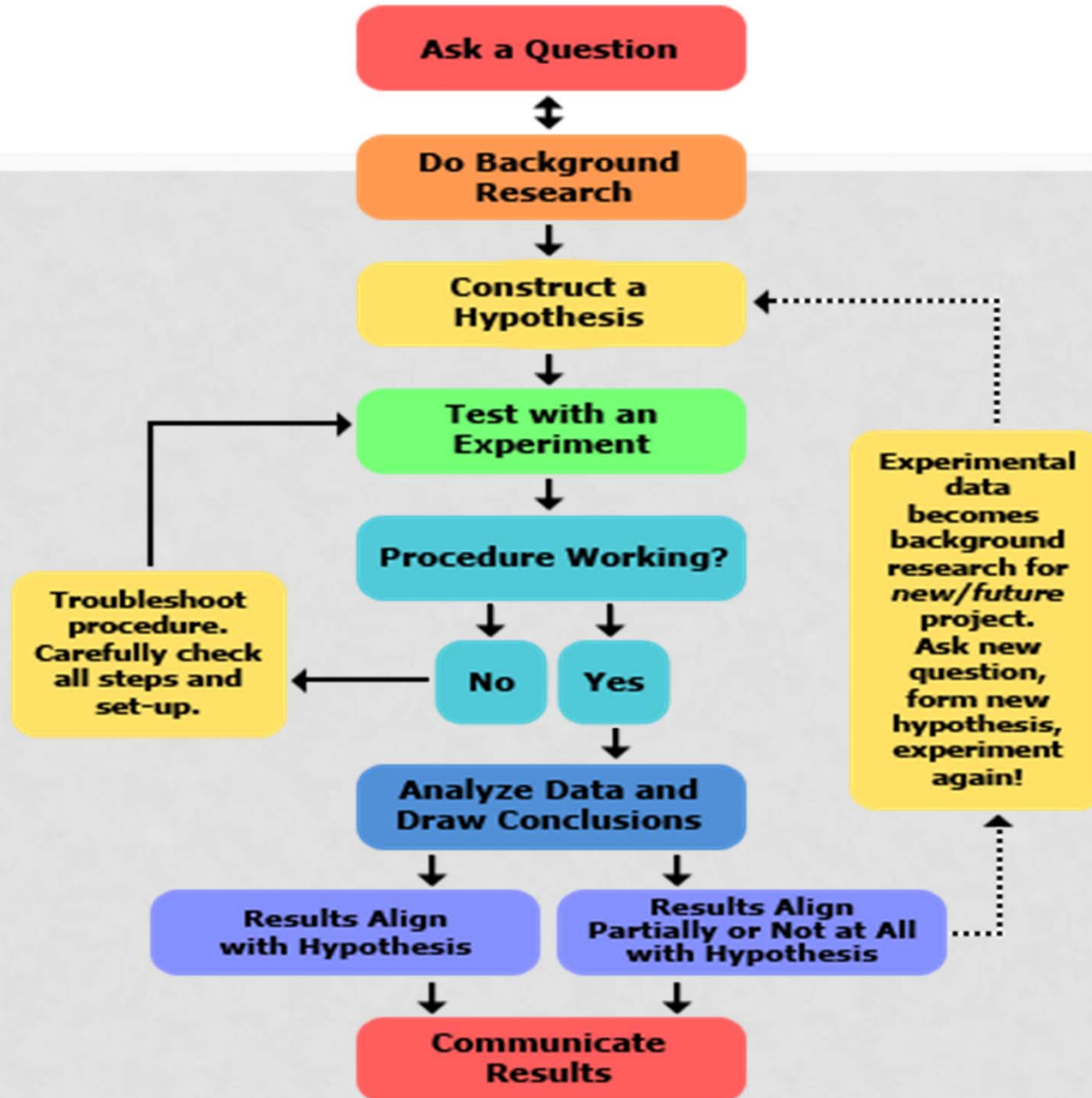
Tues
8.28.18

Today you will...

- Pick up: ruler & graph paper
- Draw a diagram of the scientific method-ISBN pg 19 (3/4 of page)
- Contrast Scientific Theory vs. Law (1/4 of page)
- Graphing Practice ISBN pg 24 & 25
- Friday is your Quiz!

◆ Make sure your PHONES are in your bags unless given permission to have them out!

Scientific Method



WHAT IS THE DIFFERENCE BETWEEN A THEORY AND A LAW?

- Theory – A system of ideas explaining many related observations and supported by scientific investigation. A theory gives an explanation of why something happens. A THEORY WILL NEVER BECOME A LAW!
- Law – A general statement that explains how the natural world behaves. Does not answer “why”. It states what happens every time.
Ex: Law of gravity.