

Wednesday, March 1, 2017

Pick up:DSQ ISN pg 166

Today you will:

1. What are Cladograms?

Homework/Planner:

Study Guide Unit 5-due Tuesday, March 7

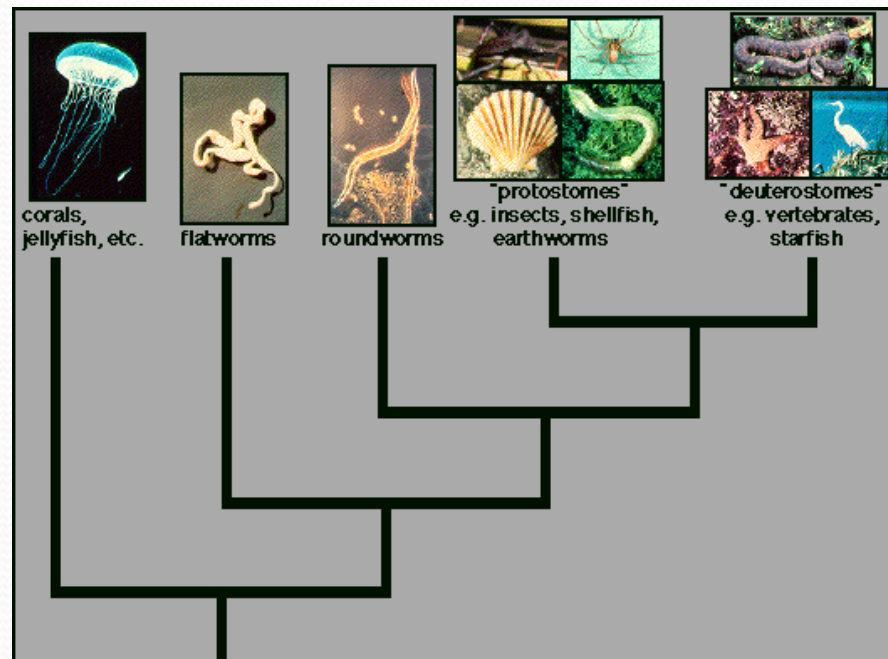
# Week of the Cuda

- Monday-Superhero v Villain Day
- Tuesday-Disney Day
- Wednesday-Tropical Day
- Thursday-Flower Power/70's Day
- Friday-Beach Day!!!!!!



# Phylogeny

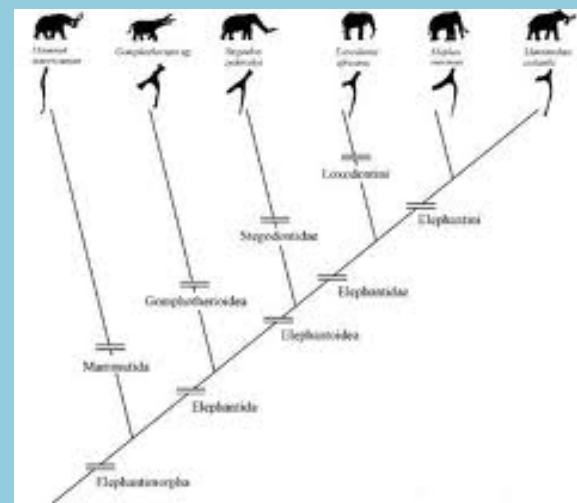
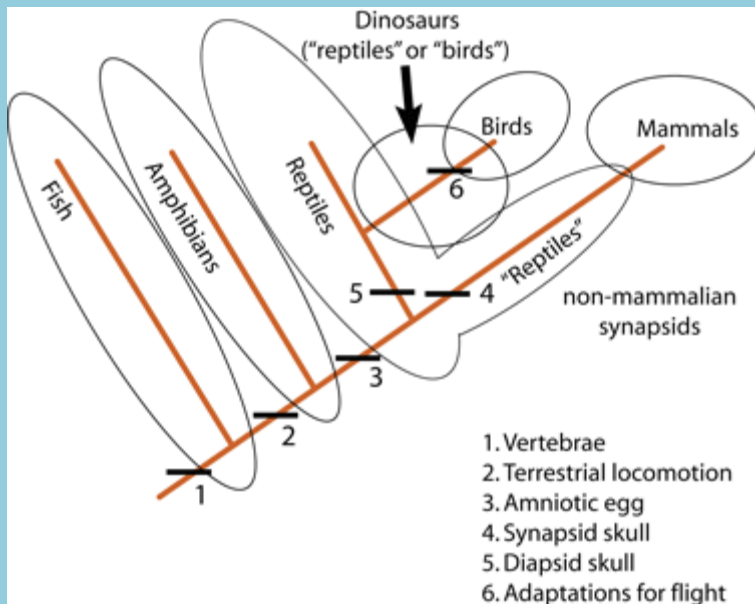
- The evolutionary history for a group of species.
  - Uses fossil records, molecular data (DNA) & evidence from living species
  - More than just physical traits

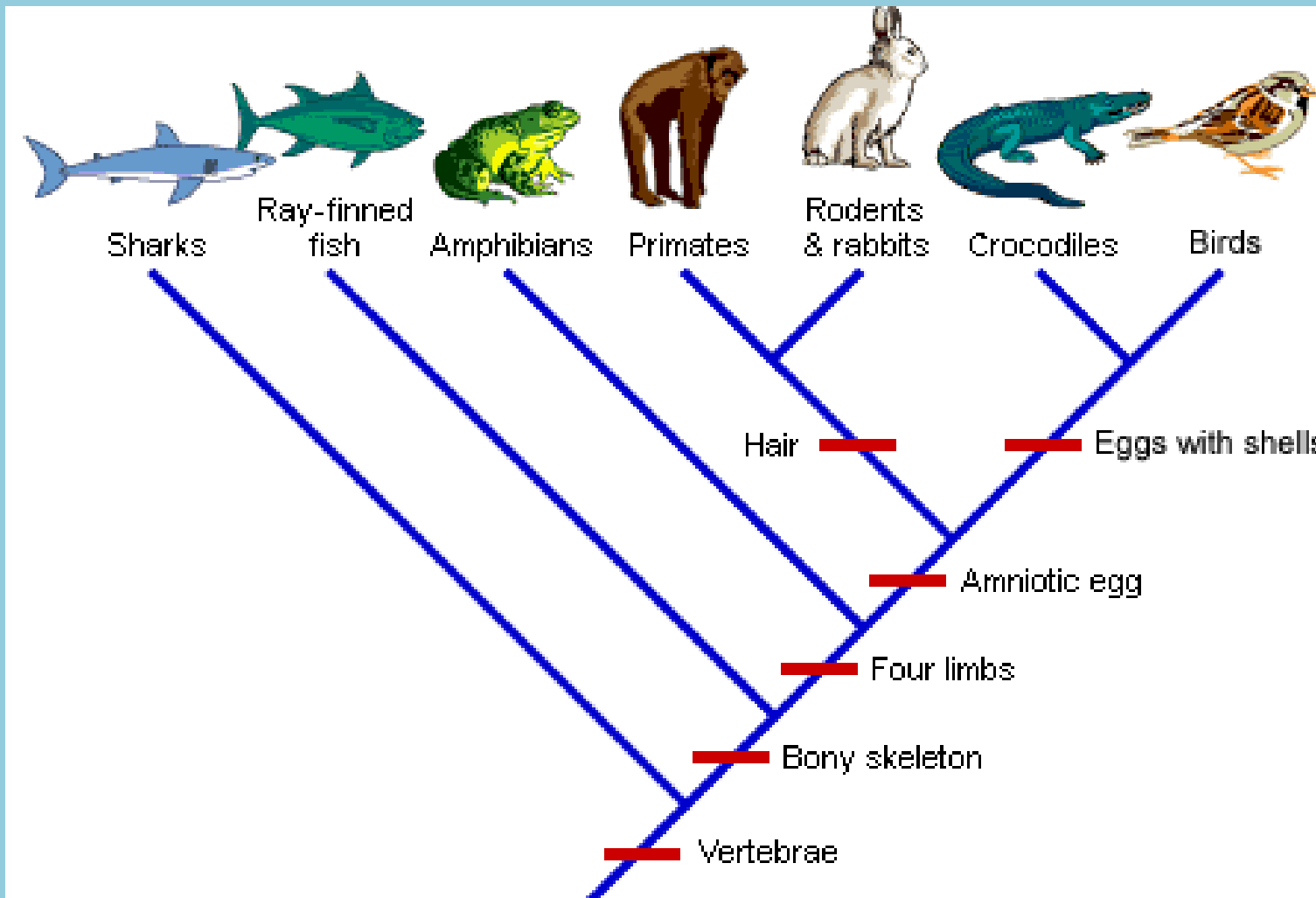


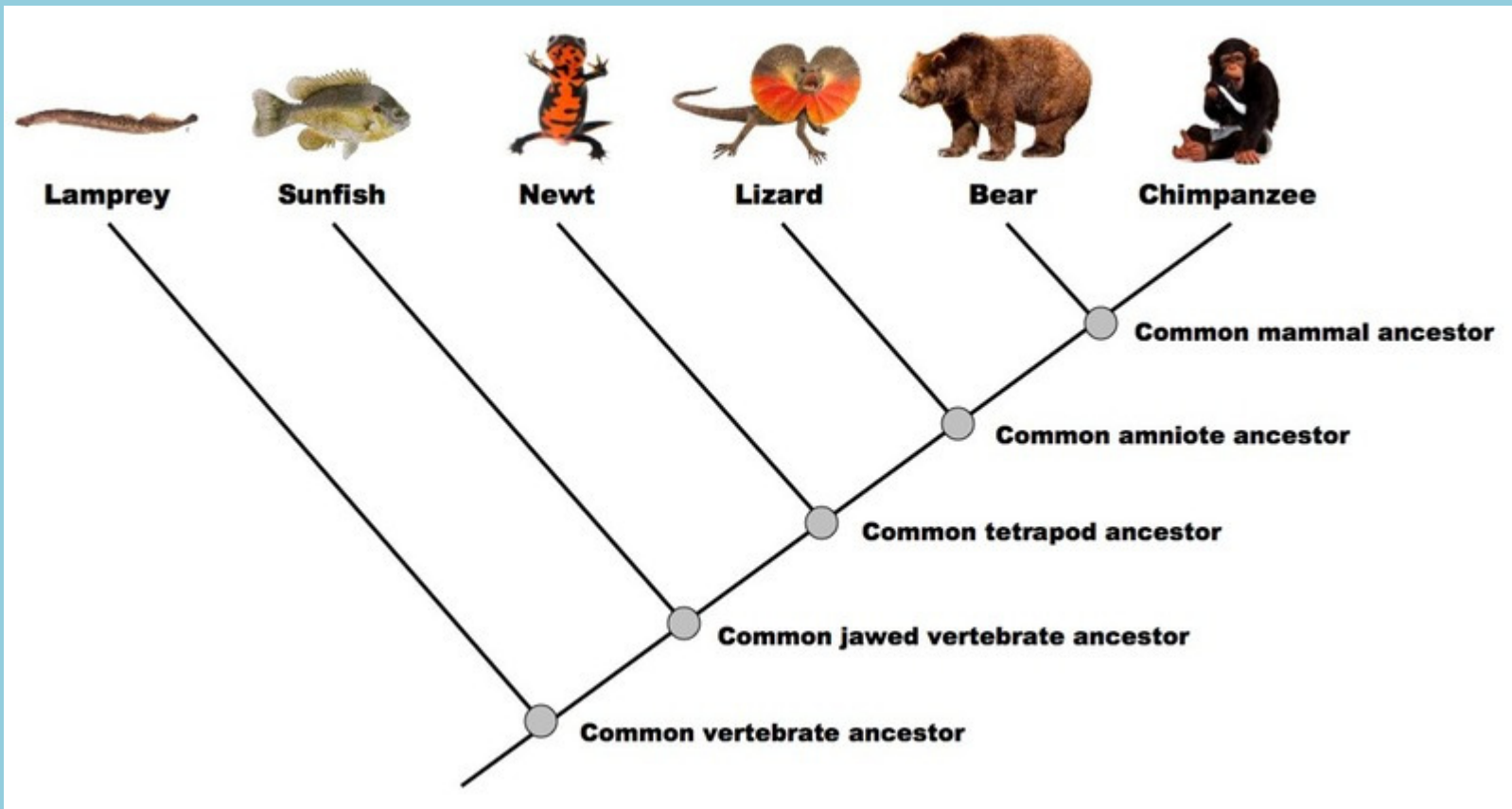
# Phylogeny can be shown using a branching diagram

- Cladistics:
- Classification based on common ancestry

- Cladogram:
- An evolutionary tree that proposes how species may be related to each other through common ancestors.







# Today's Assignment

- ISN pg 170
- TB pg 527
  - Draw the diagram
  - Define & label
    - Derived characters
    - Clades
    - Node
- ISN pg 171:
  - TB pg 525 Quick Lab
- Practice quiz is Monday!