



Tues, March 21, 2017

Pick up: none

Honors: Please bring in
field trip forms & sign up
for Wed or Friday

Today you will:

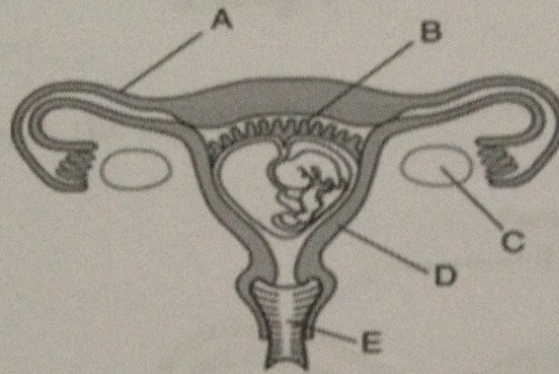
1. DSQ pg 183
2. [Crash Course-Male Anatomy](#)
3. Label Male Anatomy & Describe the function

Homework/Planner:

Daily Science Question

Daily IQ

The human female reproductive system is represented in the diagram below.

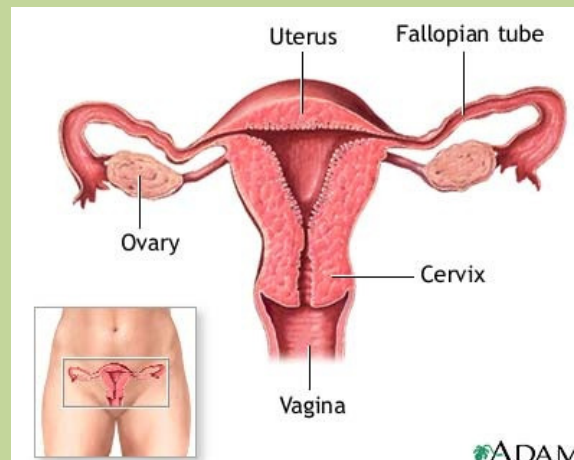


Complete boxes 1 through 4 in the chart below using the information from the diagram.

Name of Structure	Letter on Diagram	Function of Structure
1 _____	2 _____	produces gametes
uterus	D	3 _____
4 _____	B	transports oxygen directly to the embryo

Match the function with the correct organ

- D** 1. Cervix
- E** 2. Vagina
- C** 3. Uterus
- B** 4. Oviduct (Fallopian Tube)
- A** 5. Ovaries
- A. Production of egg cells or ova
- B. Transports egg to the uterus
- C. Expands to hold the growing fetus
- D. Lower end of the uterus
- E. Tube-like organ connecting uterus to outside the body



Ovaries

Production of ova (singular ovum) or egg cells

Paired organs located on either side of the uterus

Oviduct (Fallopian Tube)

Transports egg cell to uterus

Egg can take several days to travel to the uterus

Uterus

Expands to hold the growing fetus

About the size and shape of a pear

Cervix

Lower end of uterus

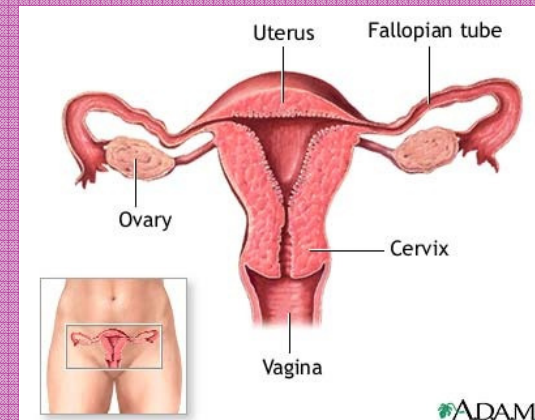
Opens into the vagina

Vagina

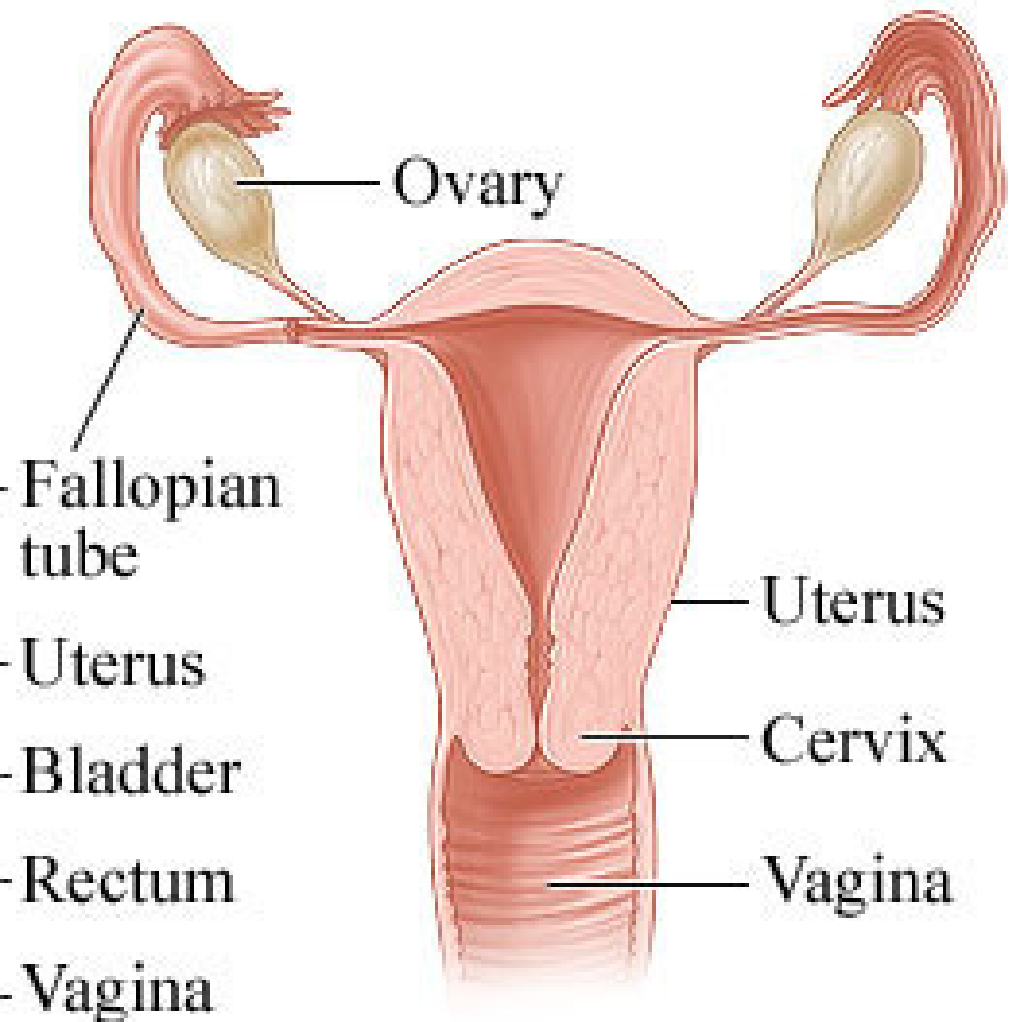
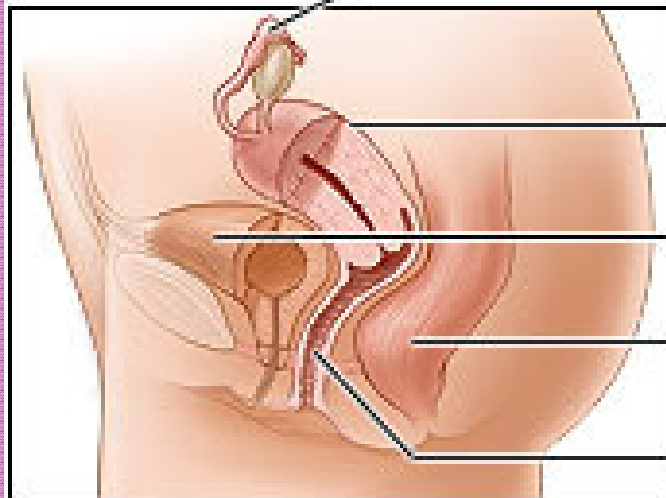
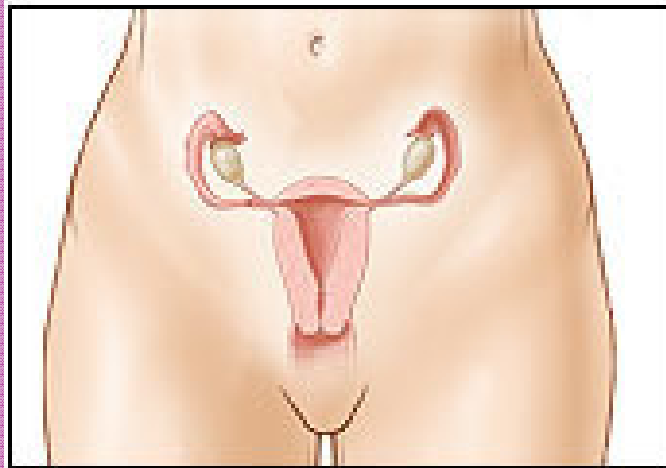
Tube-like organ connecting the uterus to outside the body

pathway that a baby takes out of a woman's body during childbirth

The route for the menstrual blood (the period) to leave the body from the uterus



Anatomy Of The Female Reproductive System



Fetus in Utero

