



Fri, March 24, 2017

Pick up: clicker

Honors: Please bring in  
field trip forms & sign up  
for Wed or Friday

Today you will:

1. DSQ ISN pg 183
2. Pass your Quiz!!

Homework/Planner:

Anything not complete up to ISN pg 181

# Daily Science Question

**Which is the correct series of events?**

- A. Gametes → Fertilization → Blastocyst → Gastrulation → Zygote → Fetus → Embryo → Baby
- B. Gametes → Fertilization → Zygote → Blastocyst → Gastrulation → Embryo → Fetus → Baby
- C. Gametes → Fertilization → Zygote → Gastrulation → Blastocyst → Embryo → Fetus → Baby
- D. Gametes → Fertilization → Zygote → Blastocyst → Gastrulation → Embryo → Baby

# VIDEO CLIP REVIEW

- <https://www.youtube.com/watch?v=K7kaw40pPYw>
- <https://www.youtube.com/watch?v=4n5-sLmnyas>
- <https://www.youtube.com/watch?v=QSN5gfbzgWC>

# Daily Science Question

*What is the purpose of the amniotic sac/fluid?*

# Daily Science Question

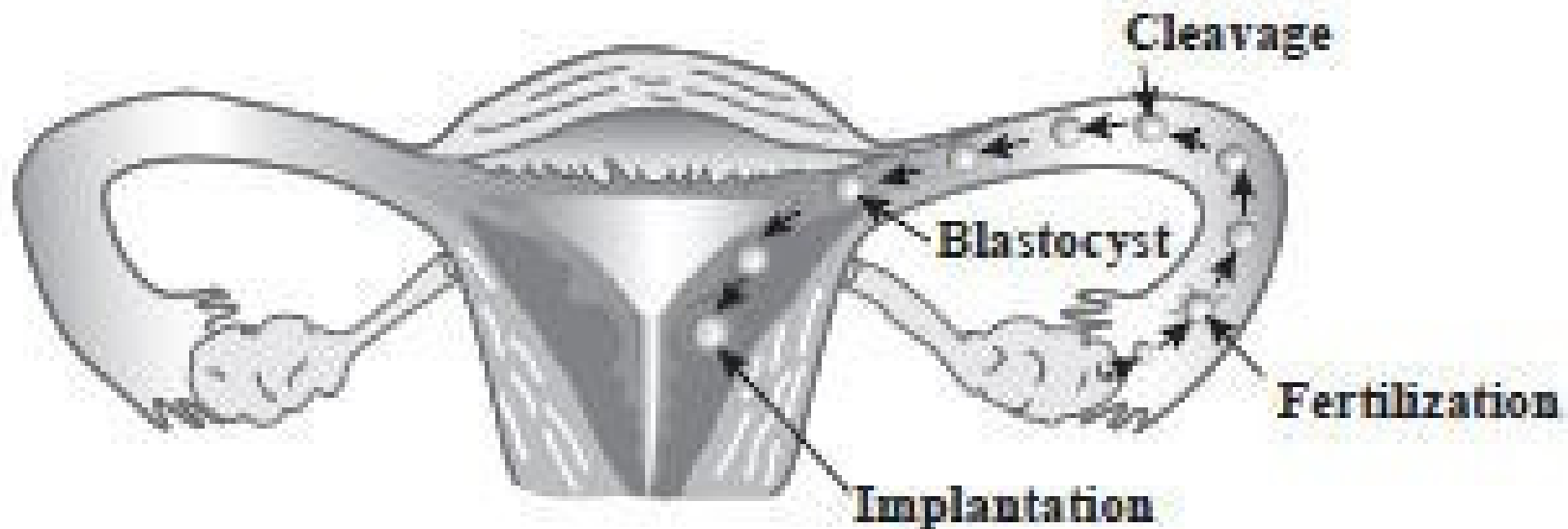
*Look in your book or ISN:*

*What is the purpose of the placenta?*

## *Practice Questions for this unit...*

- 1. Which of the following is true of a zygote?**
- A. It forms into a blastocyst**
  - B. It is an unfertilized egg**
  - C. It produces haploid male gametophytes**
  - D. It is made up of only one cell**

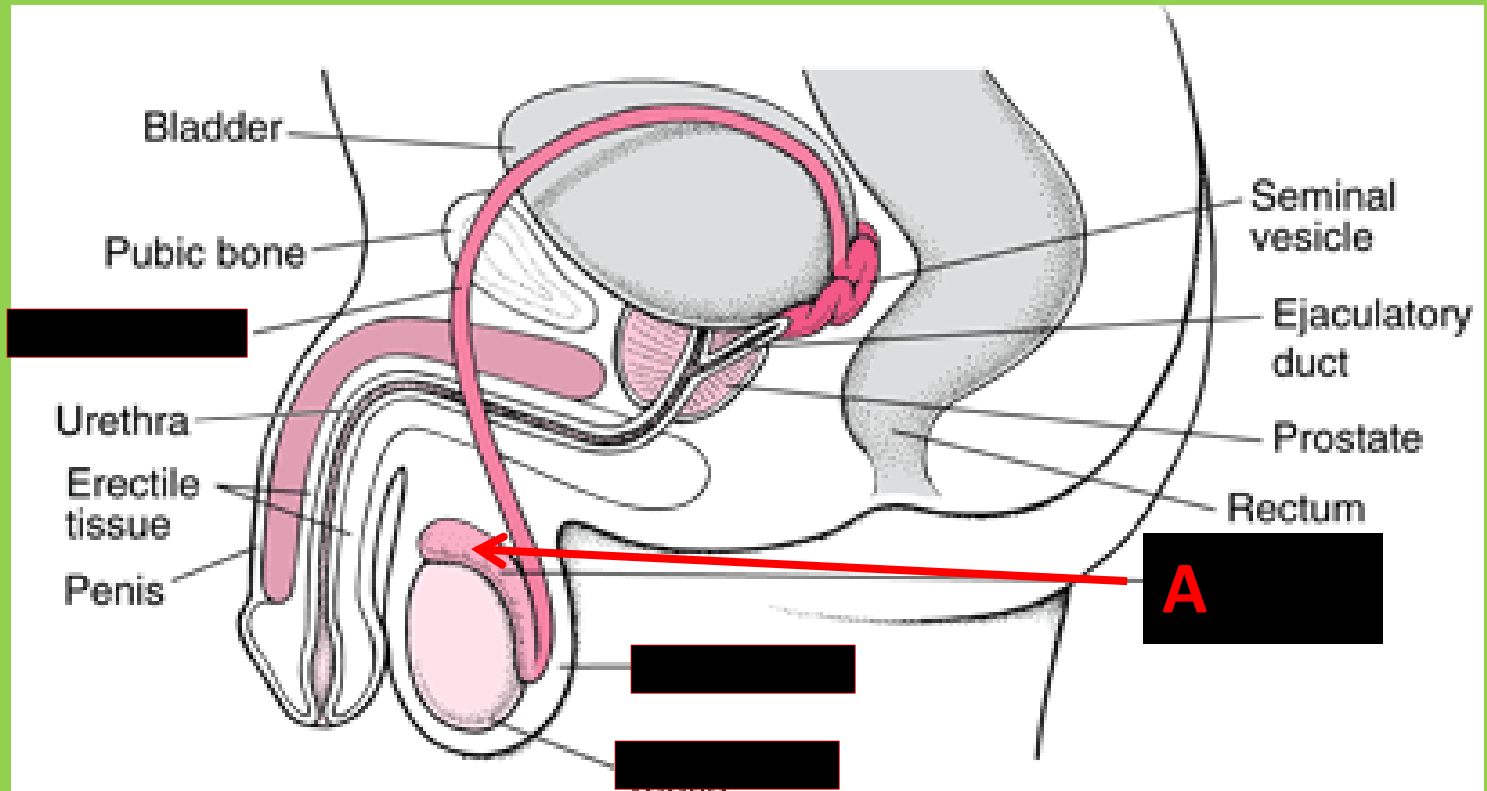
## Female Human Reproductive System



In which of the following structures of the female human reproductive system is the blastocyst implanted during normal human development?

- A. ovary
- B. uterus
- C. vagina

Below is a diagram of the male reproductive system.



1. Which structure is represented by the letter A?

- A. Scrotum
- B. Testes
- C. Epididymis



**1. Sperm are created through meiosis in an area of the testes called the seminiferous tubules. Through which structure do the sperm travel to exit the testes?**

- A. vas deferens.**
- B. seminiferous tubules**
- C. epididymis**

**1. Abnormalities present in the cells that line the uterus may prevent the production of offspring by directly interfering with which process?**

- A. the secretion of estrogen by the ovary**
- B. the production and release of egg cells**
- C. the development of the embryo**

**1. The drinking of alcoholic beverages by a pregnant woman is harmful to the development of her fetus. This is most damaging early in a pregnancy during this time because...**

**A. the lungs of the fetus become functional.**

**B. many of the essential organs of the fetus are forming.**

**C. the fetus cannot excrete wastes.**

**1. The human mother's body nourishes the growing embryo during pregnancy. Which structure nourishes the embryo and removes wastes through a network of blood vessels?**

**A. ovary**

**B. placenta**

**C. uterus**

- 1. The point at which the umbilical cord attaches to the fetus becomes the belly button after birth. What is the function of the umbilical cord for mother and fetus during fetal development?**
  - A. Liquids consumed by the mother flow through the umbilical cord and into the stomach of the fetus.**
  - B. Nutrients from the mom pass from her blood and waste products produced by the fetus travel through the umbilical cord and out through the mother's kidneys.**
  - C. Nutrients from foods digested by the mother pass from her blood to the fetus through blood vessels in the umbilical cord.**

## Quiz Instructions

- Work SILENTLY until EVERYONE is done
- Please write ALL your answers on your quiz
- Write your name!
- Draw a baby by your name for an extra point
- Your answers will be accepted automatically, but you must use arrows to advance to next question.
- When finished, you will be asked if you are sure you are done. When confirmed you will get your score.
- **When finished:**
  1. Put back in bag. Bring quiz to me
  2. Class/Homework: Bio 1- Complete Workbook Ch. 30 (omit section 2) & Ch. 31 Honors-READ those!