



PHONES & EAR BUDS away Please!

Fri, Dec 2, 2016

Pick up: diagram ISN pg 100

Today you will:

- DNA Video Clip
- Review DNA Structure & Replication-complete notes on ISN pg 101/103
- Double Helix Diagram ISN pg 100

Homework/Planner:

- Finish ISN pgs 101/103 using TB Ch. 8
- Self check on DNA Structure & Replication-Tues!

DNA

Structure

Ch. 8

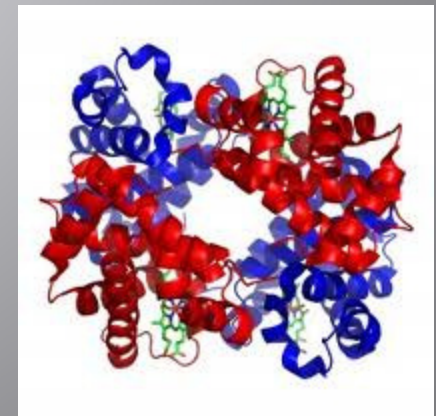
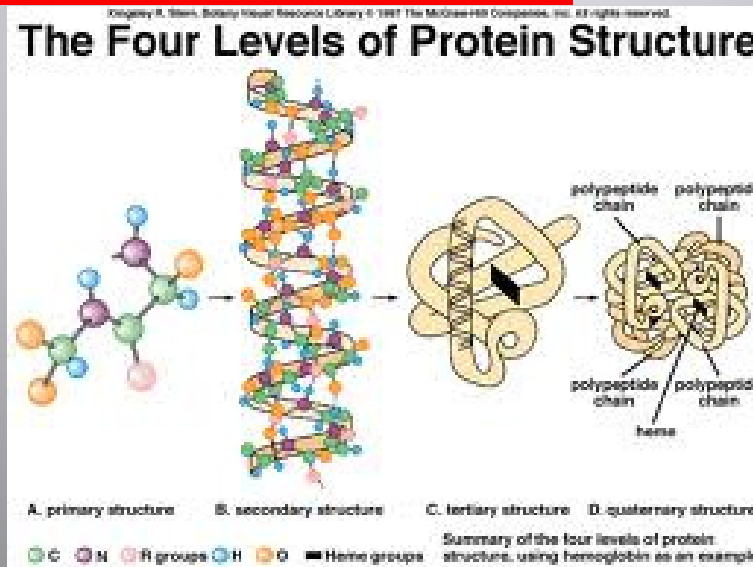
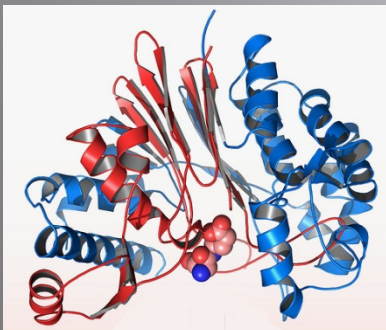
Video Clip

What is DNA?

<http://www.youtube.com/watch?v=zwibgNGe4aY&safe=active>

What does DNA really do...?

- You've been told that DNA stores & transmits genetic information... But what it really does is...
...directs the ribosomes to make proteins & it's actually **PROTEINS** & how they are arranged that **determine what we look like....!**

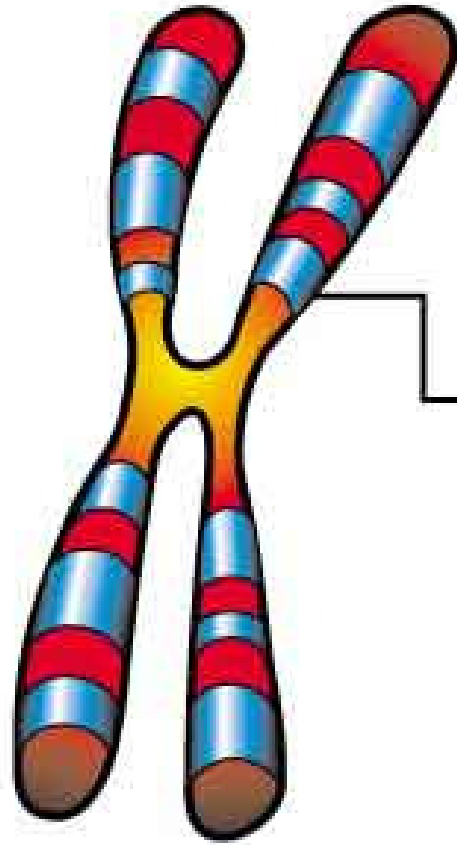


DNA = DeoxyriboNucleic Acid

molecule that contains the Genetic Blueprint of Life



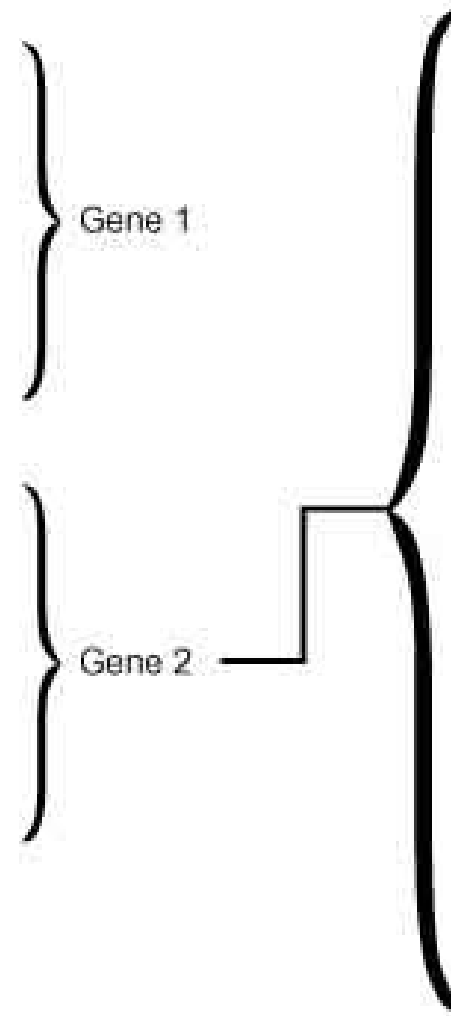
Chromosomes, Genes, DNA



Chromosome



DNA



G	T	C	A	G	A	T	C	C	A	T	T	G	A	C
C	A	G	T	C	T	A	G	G	T	A	A	C	T	G

CELL

→ **Nucleus**

→ **ChromoSOMES**

→ **DNA**

→ **mRNA** (Transcription=transcribe=summarize)

→ **RIBOSOMES**

→ **tRNA** (Translation=put into simpler terms)

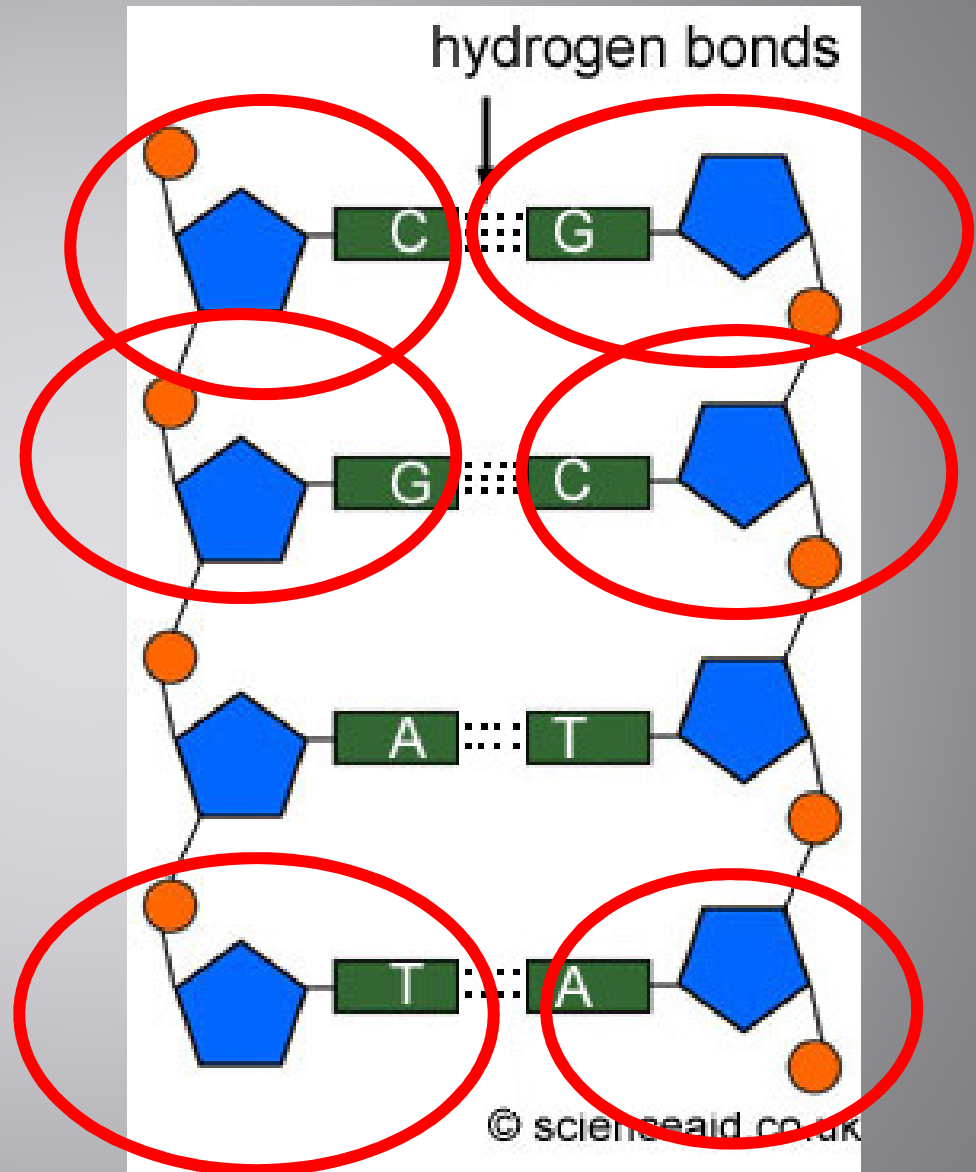
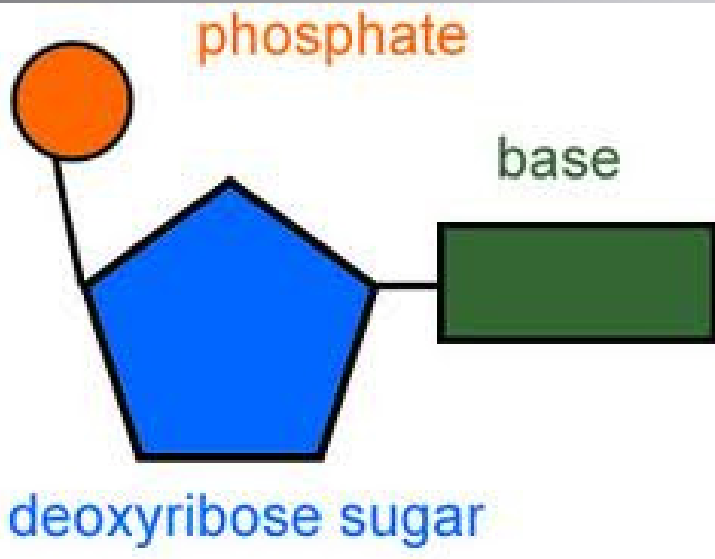
→ **Amino Acids**

→ **PROTEIN shape**

→ **Protein Function**

→ **TrAÍts**

Nucleotides Make Up DNA

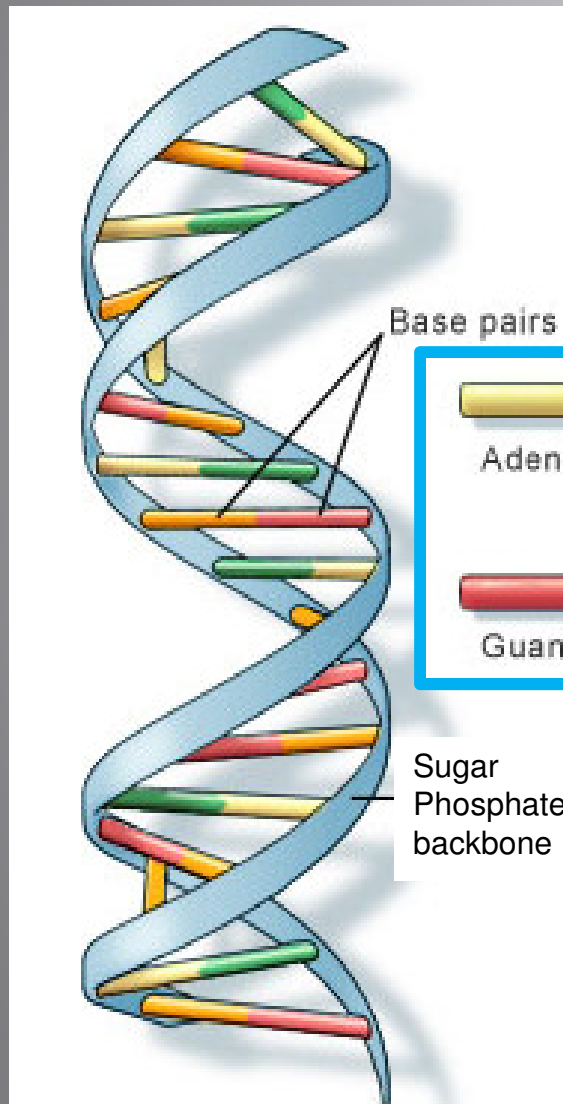


phosphate

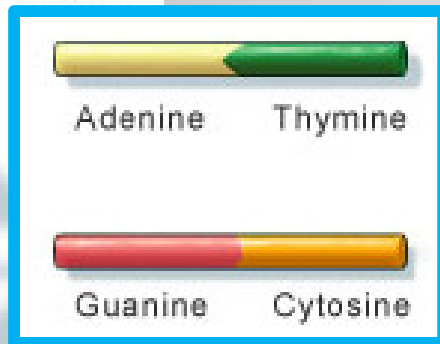
Nitrogen Base Pairing Rules

- **A – T** (**A**denine – **T**hymine)
- **C – G** (**C**ytosine – **G**uanine)
- **AAA – TTT – CCC – GGG – ATG – GCA**
- **TTT – AAA – GGG – CAC – TAC – CGT**

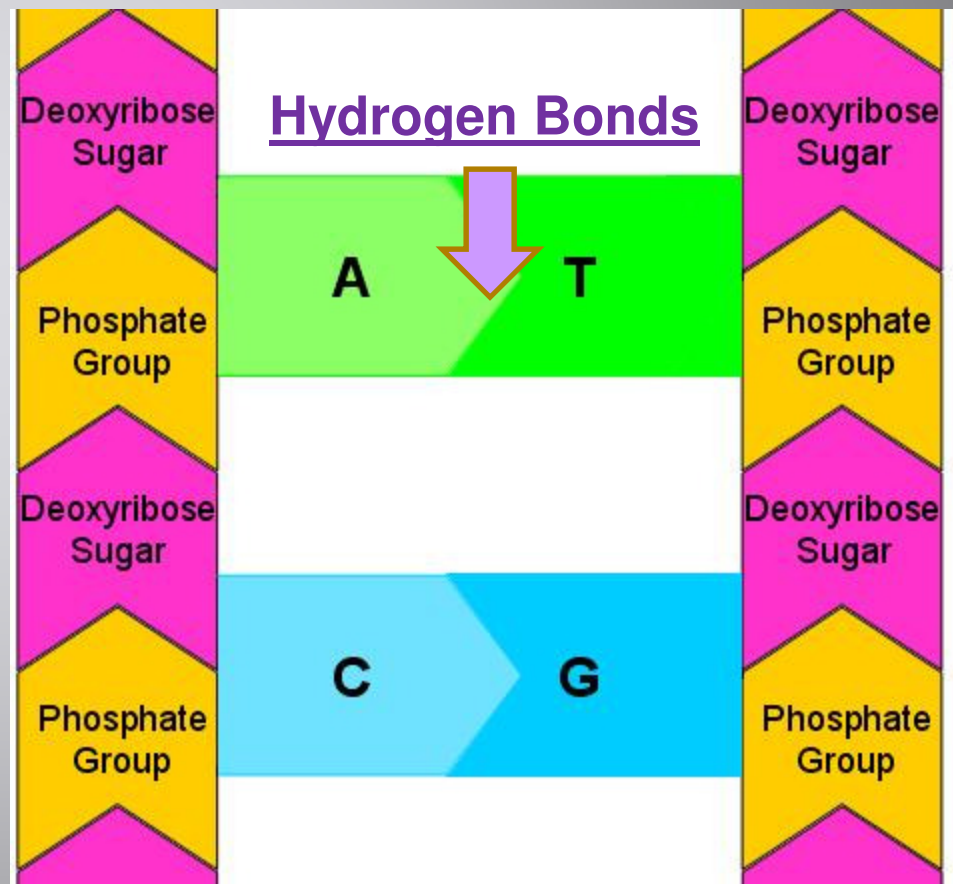
4 Nitrogen Bases



Base pairs



Sugar
Phosphate
backbone



DNA Diagram ISN pg 100

- Draw diagram of 2 strands of DNA from TB pg 230 (left side) using $\frac{1}{2}$ sheet. Label all parts: Phosphate group, sugar, nitrogen base, Hydrogen bonds, 3' and 5'.
- Use Color! Finish at home if necessary